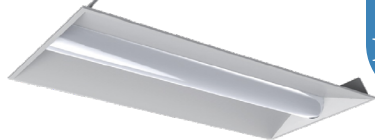


# TD RECESSED TROFFER SERIES

2' X 2'



2' X 4'



CALCULATED  
LIFETIME

50,000  
HOURS

Finish Color



White



Recessed 2X2 and 2X4 static troffer for Inverted T-Grid ceilings. Earthquake clips standard. 3,088 to 4,284 lumen packages. Its high performance LED system with advanced light distribution and attractive appearance delivers unprecedented energy savings, comfort and aesthetics all at an affordable price.

**Applications:** commercial office spaces, schools, hospitals, retail merchandising areas, etc.

**Replacement:** 2 Lamp T8/ U6 32W and 3 Lamp T8 32W

## PERFORMANCE INFORMATION\*

FIXTURE SIZE	POWER	PRODUCT CODE	CCT	LUMEN OUTPUT
2' X 2'	26W	TD 22 32 G1 35K	35K	3,198 Lumens
	26W	TD 22 32 G1 4K	4K	3,275 Lumens
	26W	TD 22 32 G1 5K	5K	3,300 Lumens
	25W	TD 22 32 G2 35K	35K	3,074 Lumens
	26W	TD 22 32 G2 4K	4K	3,250 Lumens
	26W	TD 22 32 G2 5K	5K	3,276 Lumens
2' X 4'	36W	TD 24 46 G1 35K	35K	4,365 Lumens
	36W	TD 24 46 G1 4K	4K	4,540 Lumens
	36W	TD 24 46 G1 5K	5K	4,610 Lumens
	32W	TD 24 46 G2 35K	35K	4,299 Lumens
	34W	TD 24 46 G2 4K	4K	4,590 Lumens
	34W	TD 24 46 G2 5K	5K	4,658 Lumens

Project:	
Catalog No.:	
Fixture Type:	
Notes:	

## SPECIFICATIONS

### HOUSING

Cold-rolled steel, fabricated and welded for seamless appearance.

### AMBIENT TEMPERATURE

Suitable for use in -25°C to +40°C (-13°F to 104°F)

### MOUNTING

Surface mount or chain.

### EFFICACY

Up to 126 lumens per watt (see individual wattage data)

### CCT AND CRI

3500K 4000K and 5000K CCT available; 80+CRI

### OPTICS

Frosted extruded acrylic lens for maximum source obscuration and visual comfort. High reflectance white reflector surfaces. 80+ CRI color rendering.

### WARRANTY

5 year limited warranty. Complete warranty terms located at:

[www.slgus.com](http://www.slgus.com)

### ELECTRICAL

High quality constant-current drivers rated for 50/60Hz operation, 120-277V input.

Dimmable LED system using 0-10V dimmer signals.

### Energy Data

Luminaire efficiencies of 90 and 100%

### FINISH

Polyester Powder White finish. Multi-stage process produces 3 mil thickness for superior corrosion resistance and maximum durability.

### DIFFERENCE BETWEEN G1 AND G2

TD Generation 2 Series has a diffuser trim rings, upgraded LED diode, uses less watts while keeping the same lumens output as G1.

### CERTIFICATIONS

UL Listed for dry locations. FCC compliant. RoHs compliant. No Mercury.

Design Lights Consortium® (DLC) Premium qualified product. Not all versions of this product may be DLC qualified. Please check the DLC Qualified Products List at [www.slgus.com/DLC](http://www.slgus.com/DLC) to confirm which versions are qualified.

## ORDERING GUIDE

Luminaire Type	Lumen Output*	Generation	Voltage	CCT	Finish	Options
TD 22 LED Troffer Fixture 2x2	32 3,300 Lumens*	G1 G2	Standard 120-277V	35K 4000K 4K 4000K 5K 5000K	Standard White	Standard No Option
TD 24 LED Troffer Fixture 2x4	46 4,658 Lumens*					EL UNV1 120-277V Emergency Battery Backup

Standard driver operates on any line voltage from 120-277V (50/60 Hz).

\* Data as report to DLC, actual test results may vary

## EXAMPLE: TD 22 32 G1 35k



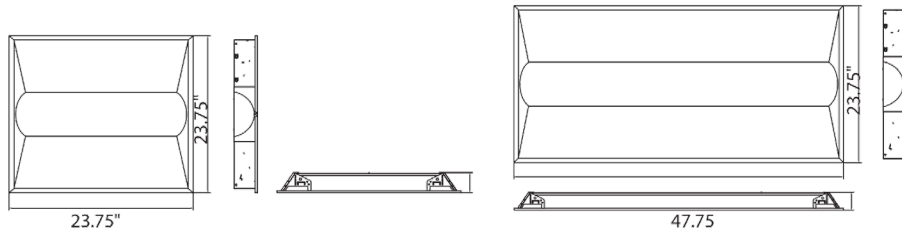
SLG Lighting

10643 W. Airport Blvd. Suite 400, Stafford, Texas 77477

Email: [support@slgus.com](mailto:support@slgus.com) | Phone: (832) 939-8412 | [www.slgus.com](http://www.slgus.com)

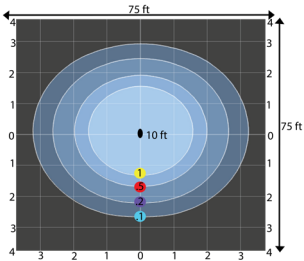
TD.V18.07

## DIMENSIONS

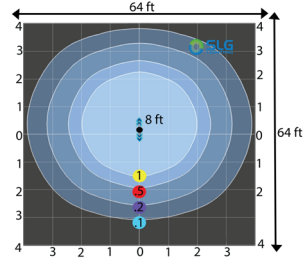


## PHOTOMETRIC

TD 22 32 (8 Feet Mounting)



TD 24 46 (8 Feet Mounting)







Multiplier	1.8	1.3	1.0	0.6	0.4
Mounting Height	6	7	8	10	12

Grid scales: Multiples of mounting height Values shown in footcandle.

## ELECTRICAL LOAD

Series Number	Wattage	Current (A)			
		120V	208V	240V	277V
TD 22 32 G1 35K	26 Watts	0.22	0.13	0.11	0.09
TD 22 32 G1 40K	26 Watts	0.22	0.13	0.11	0.09
TD 22 32 G1 50K	26 Watts	0.22	0.13	0.11	0.09
TD 24 46 G1 35K	36 Watts	0.30	0.17	0.15	0.13
TD 24 46 G1 40K	36 Watts	0.30	0.17	0.15	0.13
TD 24 46 G1 50K	36 Watts	0.30	0.17	0.15	0.13

## PERFORMANCE COMPARISON

	Product Series	LED Watts	Lumen Output	Lumens Per/Watt	REPLACES	Voltage	Mounting Height	DLC
	TD 22 32	26W	3,302 Lm	127 Lm/W	2 Lamp T8/ U6 32W	120-277V	8-12Ft	
	TD 24 42	34W	4,284 Lm	126 Lm/W	3 Lamp T8 32W	120-277V	8-12Ft	



**SLG Lighting**  
 10643 W. Airport Blvd. Suite 400, Stafford, Texas 77477  
 Email: support@slgus.com | Phone: (832) 939-8412 | [www.slgus.com](http://www.slgus.com)

Scan for more information



TD.V18.07